



BACSOFT WASTEWATER LEVEL MONITORING

THE CHALLENGE

In both the public and private sectors, the ability to accurately measure and respond to water levels in wastewater treatment facilities is critical. Strict control over water levels is essential to ensuring continuous plant availability, reducing maintenance costs, and optimizing processes. From sewer networks, to combined sewer overflow (CSO) facilities, to storm water retention basins, water level monitoring plays an important role in wastewater operations. The challenge is to monitor wastewater levels efficiently and cost-effectively, even in remote locations, in conjunction with data collection, analysis, alerts, and remote control.

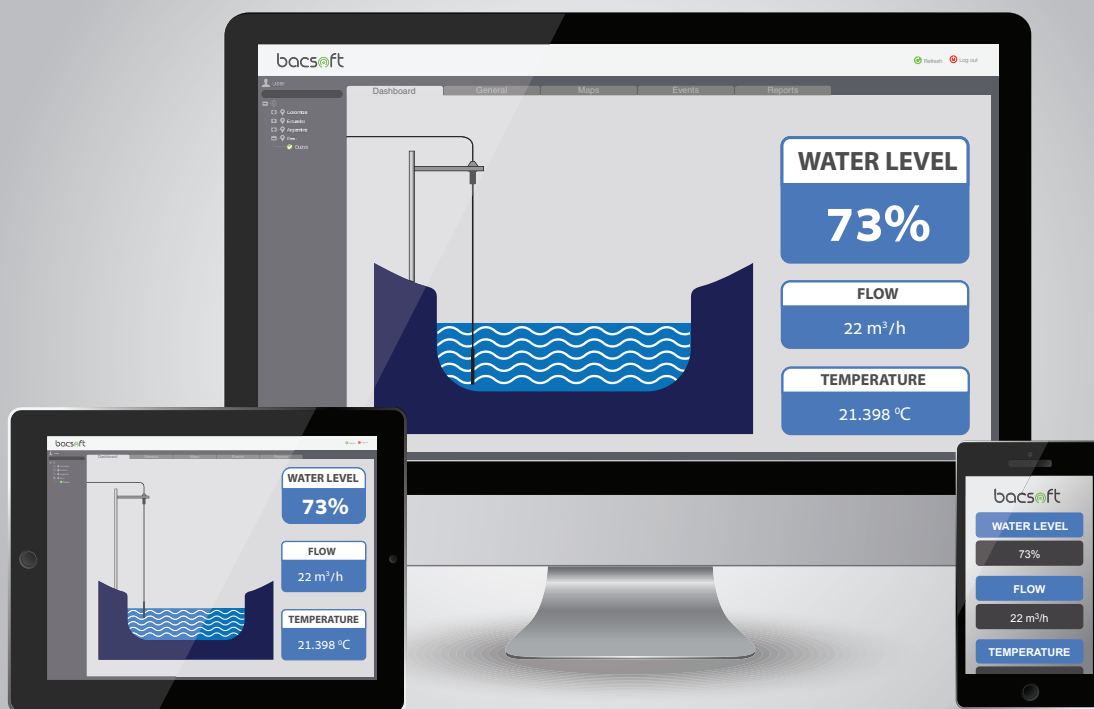
THE SOLUTION

The Bacsoft Wastewater Level Monitoring solution enables wastewater utilities to monitor water levels at key points in the sewer networks, and to prevent overflows during periods of heavy rain in conjunction with CSO and storm water retention facilities.

With the Bacsoft solution, utilities can rapidly create customized applications for web and mobile that enable

managers in the control room and in the field to monitor status, receive alerts, and remotely control infrastructure. Collected data can be analyzed and used for preventive maintenance and optimization of operations.

The solution is designed to operate in remote locations where power is unavailable, as well as in dense urban environments.





THE BENEFITS

- Robust, industrial solution
- Monitor and analyze multiple points in the wastewater treatment system
- Full remote management via laptop and mobile
- APIs for rapid integration with all SCADA solutions
- Improved security and tamper detection
- Optimized business operations
- Improved billing process
- Avoid floods and other disasters
- Savings in maintenance costs, personnel, and inconvenience to citizens nearby

SPECIFICATIONS

- B-Connect PLUS low energy Smart Controller
- Centralized management system
- Provides continuous monitoring
- Alarms for threshold exceptions
- Offline logging capabilities
- Plug & play connectivity (easy setup, all wireless)
- Pressure / Level Sensor 4-20mA, 10V or SDI 12 connected directly to the bacsoft controller
- Measurement and graphs from all sensors
- Built in reports with integrated formulas for flow calculation and billing

